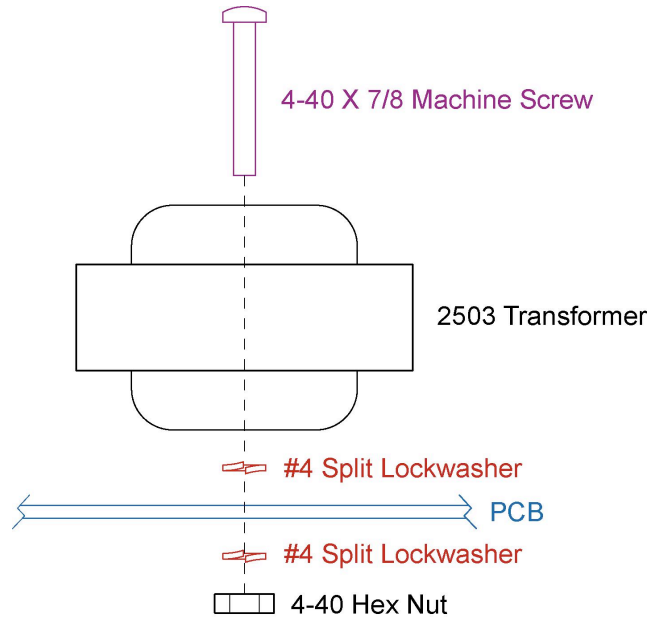


Hardware for Output Transformer	
Qty	Description
2	4-40 X 7/8 Machine Screws / Phillips / Pan Head / Steel / Zinc
2	4-40 Hex Machine Screw Nuts / Steel / Zinc
4	#4 Medium Split Lockwashers / Steel / Zinc



Hardware for main PCB	
Qty	Description
2	4-40 X 1/4 Machine Screws / Phillips / Pan Head / Steel / Zinc
2	#4 Medium Split Lockwashers / Steel / Zinc

Hardware for 553-Sub-HPF PCB	
Qty	Description
1	4-40 X 3/16 Machine Screws / Phillips / Flat Undercut / 18-8 Stainless Steel
3	4-40 X 1/4 Machine Screws / Phillips / Pan Head / Steel / Zinc
3	#4 Medium Split Lockwashers / Steel / Zinc
2	4-40 X 3/16 Small Pattern Hex Machine Screw Nuts / Steel / Zinc
1	#4 External Tooth Lockwashers / Steel / Zinc
2	Keystone #616 Brackets

Hardware for 553-Sub-LPF PCB	
Qty	Description
1	4-40 X 3/16 Machine Screws / Phillips / Flat Undercut / 18-8 Stainless Steel
3	4-40 X 1/4 Machine Screws / Phillips / Pan Head / Steel / Zinc
3	#4 Medium Split Lockwashers / Steel / Zinc
2	4-40 X 3/16 Small Pattern Hex Machine Screw Nuts / Steel / Zinc
1	#4 External Tooth Lockwashers / Steel / Zinc
2	Keystone #616 Brackets



<b>Hardware for Steel Frame &amp; Bracket</b>	
<b>Qty</b>	<b>Description</b>
2	4-40 X 1/8 Machine Screws / Phillips / Pan Head / Steel / Zinc
4	2-56 X 1/8 Machine Screws / Slotted / Pan Head / Steel / Zinc

<b>Hardware for Inductors</b>	
<b>Qty</b>	<b>Description</b>
2	Plastic Toroid Caps
2	6-32 X 9/16 Machine Screws / Phillips / Flat Head / 18-8 Stainless Steel
2	6-32 Hex Keps Nuts / Steel / Zinc

