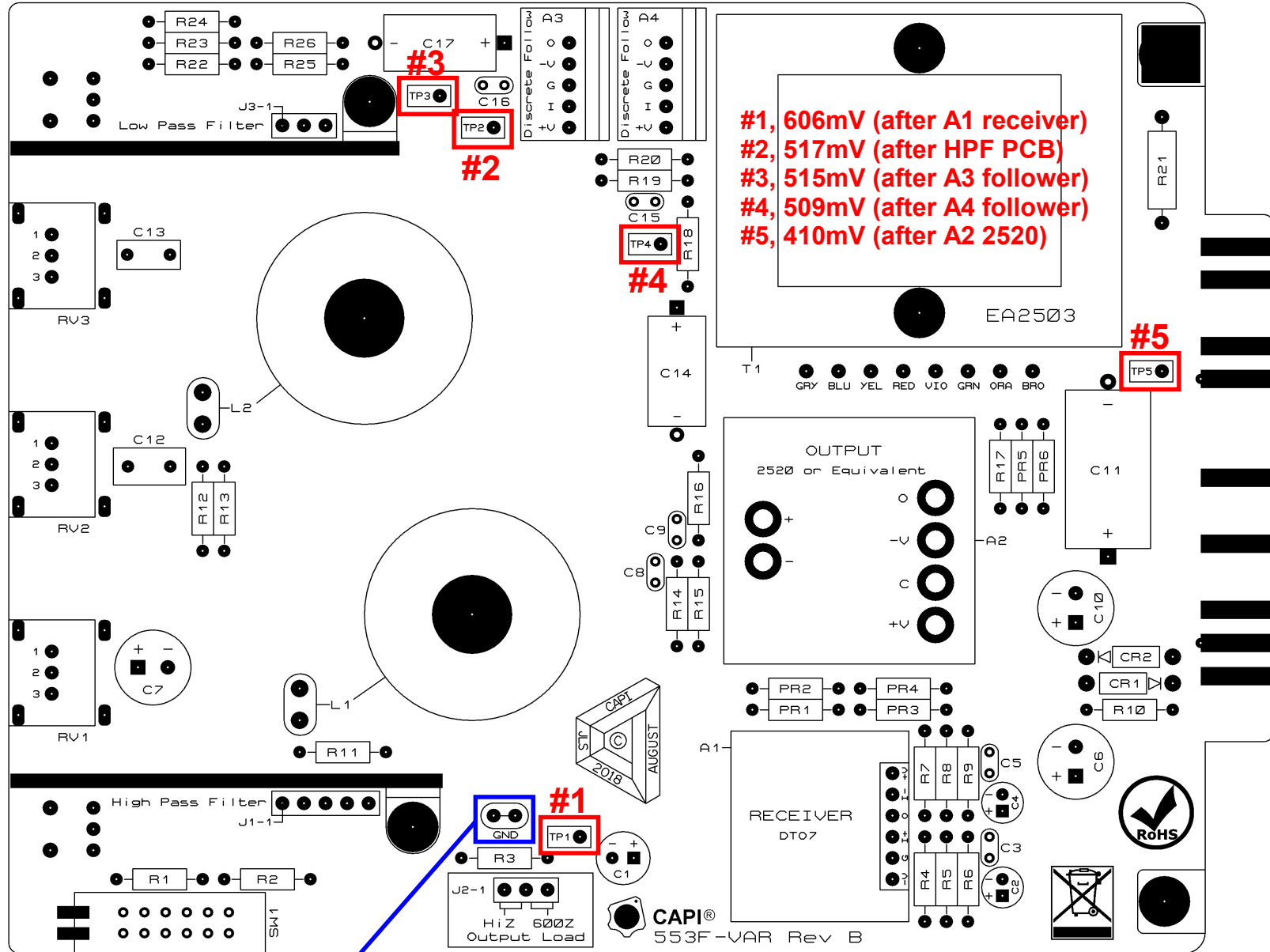


**Inject a 400Hz sine wave @ +4dBu to the input. EQ switch should be off.
 J2-1 Jumper should be set to HiZ Output Load. Output load should be 1k or greater.
 Results below were measured with a Fluke DMM set to AC Voltage.**



- #1, 606mV (after A1 receiver)**
- #2, 517mV (after HPF PCB)**
- #3, 515mV (after A3 follower)**
- #4, 509mV (after A4 follower)**
- #5, 410mV (after A2 2520)**

Black probe GND reference